

Overview of Clients:

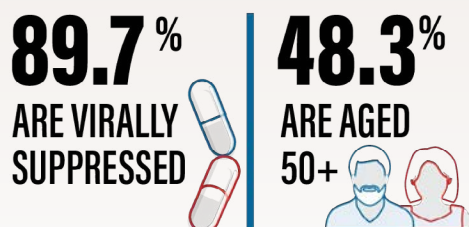
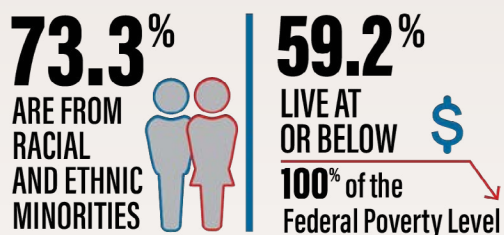
HRSA's Ryan White HIV/AIDS Program, 2021



Population Fact Sheet | March 2023

The Health Resources and Services Administration's Ryan White HIV/AIDS Program (RWHAP) provides a comprehensive system of HIV primary medical care, medications, and essential support services for low-income people with HIV. More than half the people with diagnosed HIV in the United States—more than 576,000 people in 2021—receive services through RWHAP each year. The RWHAP funds grants to states, cities, counties, and local community-based organizations to provide care and treatment services to people with HIV to improve health outcomes and reduce HIV transmission. For more than three decades, RWHAP has worked to stop HIV stigma and reduce health disparities by caring for the whole person and addressing their social determinants of health.

Ryan White HIV/AIDS Program Fast Facts: Program Clients



Learn more about the people served by RWHAP:

- **The majority of RWHAP clients are people with lower incomes.** Data show that 59.2 percent of clients are people living at or below 100 percent of the federal poverty level (FPL), and 87.8 percent of RWHAP clients are people living at or below 250 percent of the FPL. Nearly all clients served have an income at or below 400 percent of the FPL.
- **The RWHAP serves a diverse population.** Nearly three-quarters of clients are people from racial and ethnic minorities. Data show that 45.8 percent of clients are Black/African American people and 24.1 percent of clients are Hispanic/Latino people.
- **The majority of RWHAP clients are male.** Among all clients served by RWHAP, 72.2 percent are male, 25.4 percent are female, and 2.4 percent are transgender.
- **The RWHAP client population is aging.** People aged 50 years and older account for 48.3 percent of all RWHAP clients.

Medical care and treatment improve health outcomes and decrease the risk of HIV transmission. People with HIV who take HIV medication and reach and maintain viral suppression cannot sexually transmit the virus to their partner. According to 2021 data, 89.7 percent of RWHAP clients receiving HIV medical care are virally suppressed,* which is a significant increase from 69.5 percent virally suppressed in 2010.

The RWHAP delivers a range of support services to ensure that people with HIV are able to access and remain in care. The following are the most frequently utilized services:

- Outpatient ambulatory health services
- Medical case management, including treatment adherence services
- Non-medical case management services
- Food bank/home-delivered meals
- Oral health care
- Referral for health care and supportive services
- Health education/risk reduction
- Medical transportation
- Mental health services
- Emergency Financial Assistance

In addition, the RWHAP Part B AIDS Drug Assistance Program provides more than 300,000 clients with HIV-related medications and/or health care coverage assistance.

* Viral suppression is defined as a viral load result of less than 200 copies/mL at the most recent test, among people with HIV who had at least one outpatient ambulatory health services visit and one viral load test during the measurement year.