



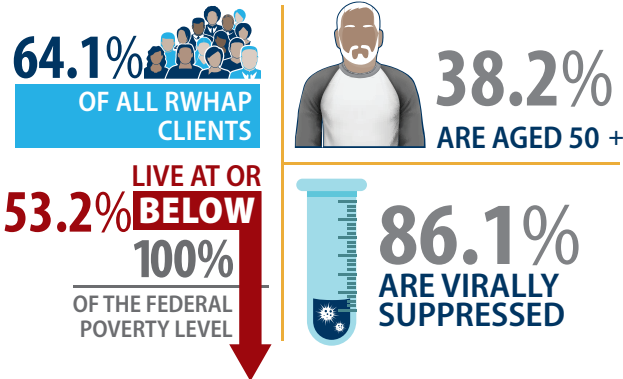
HRSA's Ryan White HIV/AIDS Program

January 2018



GAY, BISEXUAL, AND OTHER MEN WHO HAVE SEX WITH MEN (MSM): RYAN WHITE HIV/AIDS PROGRAM CLIENTS, 2016

Ryan White HIV/AIDS Program Client Fast Facts: Gay, Bisexual, and Other Men Who Have Sex with Men



The Health Resources and Services Administration's (HRSA) Ryan White HIV/AIDS Program (RWHAP) provides a comprehensive system of HIV primary medical care, medications, and essential support services for low-income people living with HIV (PLWH). More than half the people living with diagnosed HIV in the United States—an estimated 551,000 people in 2016—receive services through RWHAP each year. RWHAP funds grants to states, cities/counties, and local community-based organizations to provide care and treatment services to PLWH to improve health outcomes and reduce HIV transmission among hard-to-reach populations.

A significant proportion of RWHAP clients are men who have sex with men (MSM). Of the more than half a million clients served by RWHAP, 64.1 percent are MSM.

Below are more details about this RWHAP client population:

- ▶ **The majority of MSM clients served by RWHAP are from racial and ethnic minority populations.** Data show 62.1 percent of MSM RWHAP clients served are from racial and ethnic minority populations. Among MSM, 37.9 percent identify as white, 34.3 percent identify as black/African American, and 24.3 percent identify as Hispanic/Latino.
- ▶ **More than half of MSM clients served by RWHAP are low income.** Of MSM RWHAP clients served, 53.2 percent are living at or below 100 percent of the federal poverty level, which is lower than the national RWHAP average (62.8 percent).
- ▶ **Among MSM RWHAP clients, 4.3 percent have unstable housing.** This is slightly less than the national RWHAP average (5.2 percent).
- ▶ **The RWHAP MSM client population is aging.** MSM clients aged 50 years and older account for 38.2 percent of all RWHAP MSM clients.

Medical care and treatment improve health outcomes and decrease the risk of HIV transmission. 86.1 percent of MSM receiving RWHAP HIV medical care are virally suppressed,* which is higher than the national RWHAP average (84.9 percent).

- ▶ 71.1 percent of young MSM (aged 13–24) receiving RWHAP HIV medical care are virally suppressed.
- ▶ 69.6 percent of young black/African American MSM (aged 13–24) receiving RWHAP HIV medical care are virally suppressed.

* Viral suppression is defined as a viral load result of less than 200 copies/mL at most recent test, among PLWH who had at least one outpatient ambulatory health services visit and one viral load test during the measurement year.

